

**Brady**IFS

# Bulk Warewash Solutions



**Helping Your Team and Facility Confidently Shine**



## Quality Products Backed By Industry Best Service

BradyIFS provides an extensive warewash and kitchen program designed to offer customers a consistent, quality, safe sanitation program for all warewash and kitchen needs at competitive rates. Accompanied by BradyIFS expert service, our high-quality products provide superior results, and our specialists will work with you to ensure a successful program.

### Our services include:

- Dedicated, highly-trained warewash specialists and technicians
- Quality warewash chemicals and dispensing systems
- Equipment planning and installation
- Warewash equipment leasing, equipment financing and parts
- Employee training, literature, wall charts and testing materials
- 24/7 technical support



## Pre-Soak

### LIQUID PRE-SOAK

Item # **WWPR2**

Unit **1 Gallon - 4 per case**

This double-duty product is an effective presoak for softening food soils on flatware prior to machine processing. It helps remove egg yolk, cheese, dried ketchup and other sticky food residues, ensuring one-wash clean ware.



### SOLID PRE-SOAK

Item # **WWPR3**

Unit **6lbs. - 2 per case**

Penetrates stubborn food residues from dishes, silverware, and utensils. Daily use reduces need for rewash.



## Detergent

### ALL TEMPERATURE DISH MACHINE DETERGENT

Item # **WWMD9**

Unit **1 Gallon - 4 per case**

Item # **WWMD8**

Unit **5 Gallon**

Chlorine free, high alkaline, high performance detergent blended with superior water conditioners and soil suspending agents that remove the most difficult soils & grease; even in extreme hard water conditions. Effective in both high & low temp dish machines. Super concentrated for low in use cost.



### CHLORINATED DISH MACHINE DETERGENT

Item # **WWMD6**

Unit **1 Gallon - 4 per case**

Item # **WWMD7**

Unit **5 Gallon**

Concentrated chlorinated machine detergent for use in both high temperature and low temperature dishmachines. Active chlorine additive boosts cleaning efficiency. Contains enhanced water conditioning agents that keep dishmachines clean and running at optimal efficiency.



### METAL SAFE DISH MACHINE DETERGENT

Item # **WWMD10**

Unit **5 Gallon**

Formulated to clean the toughest soils and prevent corrosion on aluminum, copper, pewter, brass and other soft metals. Developed and tested to perform in extreme hard water. For high or low temperature machines.



### SOLID DISH MACHINE DETERGENT

Item # **WWMD11**

Unit **8lbs. - 4 per case**

Solid non-phosphate machine detergent removes heavy food soils over a wide range of water conditions in both high and low temperature dishmachines.



## Rinse Aid

### ALL TEMPERATURE RINSE AID

Item # **WWRA4**

Unit **1 Gallon - 4 per case**

Item # **WWRA5**

Unit **5 Gallon**

Concentrated rinse additive delivers rapid sheeting for spot free drying in both low and high temperature dish machines. Low foaming surfactant formula delivers superior drying performance and excellent sheeting action.



### HEAVY DUTY HARD WATER RINSE AID

Item # **WWRA6**

Unit **1 Gallon - 4 per case**

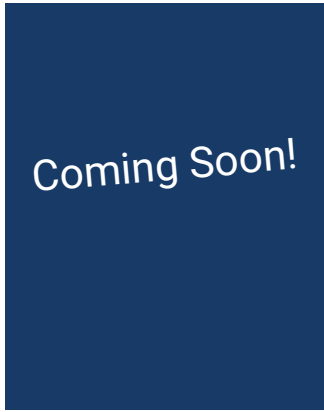
Premium specialty rinse additive formulated to control high levels of water hardness and total dissolved solids (TDS) in difficult water conditions.



## CHLORINE DISH MACHINE SANITIZER

Item #	WWSA8
Unit	1 Gallon - 4 per case
Item #	WWSA9
Unit	5 Gallon

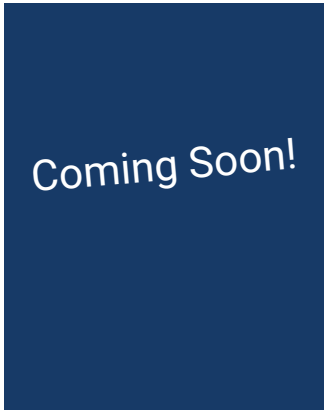
**Coming Soon!** EPA registered sodium hypochlorite based sanitizer for use in low temperature and low energy dishmachines. It sanitizes ware and aids in stain and protein soil removal on plastic, china, and tableware in the wash cycle.



## PRO QUAT SANITIZER

Item #	WWSA6
Unit	1 Gallon - 4 per case
Item #	WWSA5
Unit	5 Gallon

**Coming Soon!** NSF International Certified and EPA approved broad range sanitizer. Pro Quat kills 99.99% of food service organisms Listeria, E-Coli, and Salmonella. A versatile product, it can be used to sanitize serving ware, utensils, pots & pans, and food processing equipment.



# Bulk Three Compartment Sink Dish Detergent

## POT & PAN DETERGENT

Item #	WWDS2
Unit	1 Gallon - 4 per case
Item #	WWDS3
Unit	5 Gallon



Ideal for cleaning pots, pans and dishes in a commercial setting. This product quickly cleans and leaves items spot and film free.

## PREMIUM POT & PAN DETERGENT

Item #	WWDS4
Unit	1 Gallon - 4 per case
Item #	WWDS5
Unit	5 Gallon



Ideal for cleaning pots, pans and dishes in a commercial setting. This product has long lasting suds and a powerful grease cutting formula.

# Oven & Grill Cleaners

## OVEN & GRILL CLEANER

Item #	CHFS2
Unit	1 Quart - 12 per case
Item #	CHFS2
Unit	1 Gallon - 4 per case
Item #	CHFS3
Unit	5 Gallon



A heavy-duty, non-flammable, commercial cleaner designed for use on warm or cold surfaces. Quickly removes baked-on foods, grease and carbon deposits.

## HEAVY DUTY OVEN & GRILL GEL

Item #	CHFS6
Unit	1 Quart - 12 per case
Item #	CHFS5
Unit	1 Gallon - 4 per case



Thickened Oven, Grill & Hood Cleaner – A premium high performance, non fuming, non-flammable, non-butyl, thickened cleaner that clings to vertical surfaces providing longer contact time for easier cleaning. Quickly dissolves even the toughest soils like baked-on carbon & burnt soils. NSF International Certified

# Miscellaneous **INDIVIDUAL** Products

## ALL PURPOSE DEGREASER

Item #	Unit
CHDE5	1 Gallon - 4 per case
Item #	Unit
CHDE6	5 Gallon



Formulated to instantly dissolve greasy, oily messes, this fast acting product will quickly delivery the clean you are looking for. For light and heavy duty cleaning on a variety of surfaces.

## LIQUID ENZYME

Item #	Unit
CHDAL6	1 Quart - 12 per case
Item #	Unit
CHDAL7	1 Gallon - 4 per case
Item #	Unit
WWM16	5 Gallon



Odor Eliminator, Cleaner & Drain Maintainer with a Reduced Environmental Impact Liquid Enzyme is an acid-free, non-corrosive formula with enzyme producing bacteria to digest complex proteins, fats, greases, and odors. Unlike air fresheners, Liquid Enzyme's probiotic bacteria continue to clean long after initial application. Leaves the area with a refreshing lemon and sage scent.

## HEAVY DUTY DELIMER

Item #	Unit
WWMD3	1 Gallon - 4 per case



Heavy Duty Delimer eliminates hard water deposits and lime scale from dish machines and stainless steel.

## GLASS CLEANER CONCENTRATE

Item #	Unit
CHGL2	1 Gallon - 4 per case



Non-streaking formula that cleans and shines glass, sinks, mirrors, porcelain, marble, plastic, stainless steel, vinyl, chrome, aluminum and more.

## LEMON NEUTRAL CLEANER

Item #	Unit
CHAP10	1 Gallon - 4 per case



Created for versatility, this pH neutral cleaner can be used from counter tops to floors. It will clean a variety of spoils and leaves no film. Great for use in spray bottles, for mops, and/ or auto-scrubbers.

## Other Miscellaneous Products

### GREASE TRAPS & DRAIN CLEANSER F.O.G. PUCKS LARGE

Item #	Unit
Z320C1400	2.5 X 8 oz. Pucks 64 per case



Grease Trap & Drain Cleaner FOG pucks (8oz or 226g) is a bacteria block, specifically formulated and packaged for use in restaurant drains & grease traps. Normal use eliminates the cost of daily or weekly treatments and reduces malodors that attract fruit flies.

### NEEM DRAIN TREATMENT F.O.G. PUCKS SMALL

Item #	Unit
Z321C1200	1.25 X 9/16 Pucks 400 per case



NEEM Drain Treatment FOG Pucks (1/2oz or 16g) provide a continuous dosing of beneficial bacteria and effective ingredients into the beverage tray drain to help prevent build-up and control odors, which will help keep fruit flies away.

### GREEN EARTH® GARBAGE DISPOSAL CLEANER

Item #	Unit
WWSA0007	2 oz. pouches 30 per bucket



Green Earth® Garbage Disposal Cleaner is an effective foaming microbial cleaner and freshener for all types of garbage disposals. The pleasant fragrance along with the microbial cleaning action leave tough-to-reach disposal sidewalls, blades, and pipes clog free and smelling fresh.

### OXY DESTAINER POWDER

Item #	Unit
LASP1	2 X 8 lbs. Jars



An oxygen releasing compound formulated to remove stains from china and plasticware in restaurants, cafeterias and institutional kitchens. May be used as a presoaking solution prior to machine or manual dishwashing.

### TEST STRIPS & ROLLS

Item #	Unit
CG9033	Chlorine Test Paper Roll - 1 Roll
CG1540	QT 40 Quaternary Ammonia Roll - 1 Roll
CG9034	PH Strip Test Roll - 1 Roll





**WAREWASH DISPENSER TAGS**

Item #	Quantity
WWMI1	1

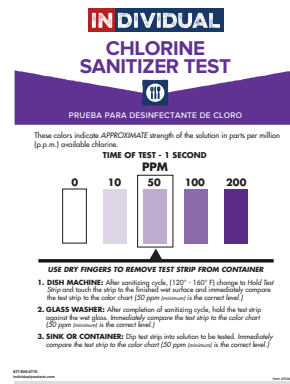
**THREE SINK DECALS**

Item #	Quantity
9266500	1



**SANITIZER TESTING PROCEDURE WALL CHART**

Item #	Quantity
SASCD6	1



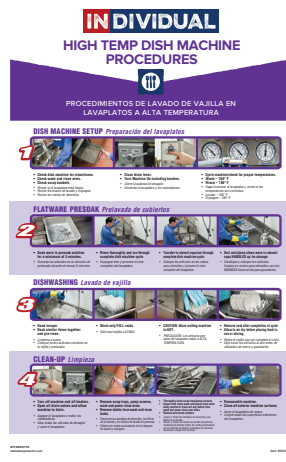
**CHLORINE SANITIZER TEST PROCEDURES WALL CHART**

Item #	Quantity
SASCD4	1



**PRE-SOAK PROCEDURES WALL CHART**

Item #	Quantity
SASCD2	1



**HIGH TEMP PROCEDURES (FRONT)  
LOW TEMP PROCEDURES (BACK)**

Item #	Quantity
SASCD3	1



**POT & PAN CLEANING PROCEDURE WALL CHART**

Item #	Quantity
SASCD7	1

# Warewash Dispensing Equipment



## QUANTURA 200 DISHWASH TWO PRODUCT DOSING SYSTEM

Item #	Description	Unit
QD200P-BT/C/U9	Quantura 2 Pump Warewash Pump Probeless	1

Two-product Liquid / Liquid warewashing system, designed to provide reliable, precise, and consistent dispensing of detergent and rinse aid into single tank, conveyor, or flight-type dish machines.



## QUANTURA 100 DISHWASH ADD ON PUMP

Item #	Description	Unit
QD100-BT/C/U9	Quantura 200 for 3 Product Dosing System	1

Add on pump for Low Temperature warewashing systems, designed to provide reliable, precise, and consistent dispensing of chlorine sanitizer into single tank, conveyor, or flight-type dish machines.



## BRIGHTWELL ECOSINK 1 - PRODUCT GARDEN HOSE CONNECTION

Item #	Description	Unit
DS1HC-S/U9	Dispenser only - not a kit - does not include the faucet adaptors or hose.	1

Single portioner with dial control for three compartment sinks and all dilution applications. Can add up to four in a series. 4 GPM



## BRIGHTWELL ECOSINK 2 - PRODUCT GARDEN HOSE CONNECTION

Item #	Description	Unit
DS1HC1HC-S/U9	Dispenser only - not a kit - does not include the faucet adaptors or hose.	1

Two product dispenser designed for three compartment sinks for manual dishwashing in industrial kitchens. Female garden hose inlet for faucets connections with adaptors. 4 GPM



## BRIGHTWELL ECOSINK 2 HOT/COLD CONNECTION

Item #	Description	Unit
DS1HC1HH-S/U9	Brightwell EcoSink 2-Product Hot/Cold Connection	1

Two product dispenser designed for three compartment sinks for manual dishwashing in industrial kitchens. Hot/cold version with 3/8" OD 90 degree connection fittings. 4 GPM

# Warewash Dish Machines



## WAREFORCE® UL30

Unit	Racks Per Hour	Gallons Per Rack
UL30	30	1.16

- Low Temp Undercounter Chemical sanitizing
- Fill and dump with sustaining heater
- 120-second cycle
- Stainless steel wash pump assembly
- Pumped drain for floor and wall installations
- Electromechanical timer
- Delime switch
- Low product indicator light
- Built-in chemical pumps and priming switches
- Durable stainless steel double-wall construction
- 115/60/1
- ENERGY STAR® certified



## WAREFORCE® UL30-FND

Unit	Racks Per Hour	Gallons Per Rack
UL30-FND	30	1.10

- High temperature sanitizing undercounter
- Fill and dump
- 120-second cycle
- Built-in booster heater with Sani-Sure™ final rinse system
- Stainless steel wash pump assembly
- Pumped drain for floor and wall installations
- Solid state controls
- Delime cycle
- Built-in chemical pumps and priming switches
- Durable stainless steel double-wall construction
- 208-230/60/1



## WAREFORCE® DG-E

Unit	Racks Per Hour	Gallons Per Rack
DG-E	39	1.15

- Low Temp glasswasher
- Accommodates glasses and ware up to 11" tall
- Electronic timer
- Stainless steel wash pump assembly
- Built-in sustainer heater
- Easy-access controls
- Delime switch
- Built-in stainless steel scrap accumulator
- Built-in chemical pumps and priming switches
- Durable stainless steel construction
- 115/60/1
- ENERGY STAR® certified



# Warewash Dispensing Equipment



## WAREFORCE® CG

Unit	Racks Per Hour	Gallons Per Rack
CG	1200 Glasses per hour	10 gallons of water per hour

- Low Temp rotary glasswasher
- Accommodates glassware up to 12" tall
- Single switch operation
- Hot or cold fresh water final rinse
- Built-in chemical pumps and priming switches
- Durable stainless steel construction
- 208-230/60/1



## WAREFORCE® I-E

Unit	Racks Per Hour	Gallons Per Rack
I-E	41	1.02

- Low Temp Single rack dish machine
- 90-second cycle
- Fill and dump operation disposes of dirty water, replacing it with a fresh water rinse every cycle
- Electronic timer
- Top-mounted controls
- Delime switch
- Self-draining stainless steel wash pump eliminates soil and detergent carryover between the wash and rinse cycles
- Low product indicator light
- Built-in stainless steel scrap accumulator
- Built-in chemical pumps and priming switches
- Field convertible from straight-thru to corner and vice versa, kit required
- Durable stainless steel construction
- Internal sump
- 115/60/1
- ENERGY STAR® certified



## WAREFORCE® II

Unit	Racks Per Hour	Gallons Per Rack
II	82	1.06

- Dual-rack Low Temp dish machine
- Electronic timer
- Fill and dump operation disposes of dirty water, replacing it with a fresh water rinse every cycle
- Top mounted controls
- Delime switch
- Self-draining stainless steel wash pump eliminates soil and detergent carryover between the wash and rinse cycles
- Low product indicator light
- Built-in stainless steel scrap accumulator
- Built-in chemical pumps and priming switches
- Durable stainless steel construction
- 115/60/1
- ENERGY STAR® certified

# Warewash Dispensing Equipment



## WAREFORCE® HT-180

Unit	Racks Per Hour	Gallons Per Rack
HT-180	63	0.89

- High temperature single rack dish machine
- Built-in booster heater with Sani-Sure™ final rinse system
- Four selectable timed cycles
- Stainless steel wash pump assembly
- Solid-state controls with three selectable timed cycles
- Delime switch
- Exhaust vent fan control
- Field convertible from straight-thru to corner and vice versa, kit required
- Durable stainless steel construction
- 208-230/60/1 or 208-230/60/3
- ENERGY STAR® certified

## WAREFORCE® 44

Unit	Racks Per Hour	Gallons Per Rack
44	225 high temp / 209 chemical sanitizing	0.68 high temp / 0.78 chemical sanitizing



- 44" conveyor dishwasher low or high temp
- Fully-automatic (auto-fill, auto-stop)
- Exclusive EnergyGuard control system cuts idle energy use by operating the machine only when a rack is being washed or rinsed.
- 25" chamber clearance accommodates oversized sheet pans and other large ware
- Extra-long separation between wash and rinse sections isolated dirty water and prevents detergent carryover
- Adjust-A-Peak feature allows operators to adjust conveyor speed without impeding energy efficiently
- Quiet self-draining stainless steel pump system delivers maximum performance and keeps noise to a minimum
- External drain handle so operator does not have to reach into the machine
- Durable stainless steel construction
- 208-230/60/3

## WAREFORCE® 66

Unit	Racks Per Hour	Gallons Per Rack
66	225 high temp / 209 chemical sanitizing	0.68 high temp / 0.78 chemical sanitizing



- 66" conveyor dishwasher low or high temp
- Fully-automatic (auto-fill, auto-stop)
- Exclusive EnergyGuard control system cuts idle energy use by operating the machine only when a rack is being washed or rinsed.
- 25" chamber clearance accommodates oversized sheet pans and other large ware
- Extra-long separation between wash and rinse sections isolated dirty water and prevents detergent carryover
- Adjust-A-Peak feature allows operators to adjust conveyor speed without impeding energy efficiently
- Quiet self-draining stainless steel pump system delivers maximum performance and keeps noise to a minimum
- External drain handle so operator does not have to reach into the machine
- Durable stainless steel construction
- 208-230/60/3

Our **COMPREHENSIVE SERVICE PROGRAM** gives you the **HIGHEST PERFORMANCE** at the **LOWEST COST** of ownership.

- Dedicated, highly-trained warewash specialists & technicians
- Quality warewash chemicals and dispensing systems
- Equipment planning and installation
- Warewash equipment leasing, equipment financing and parts
- Employee training, literature, wall charts and testing materials
- 24/7 technical support

**Brady**IFS

800.293.4698  
[www.bradyindustries.com](http://www.bradyindustries.com)



Scan this QR code for  
more information.